



Bends & Risers

Bends

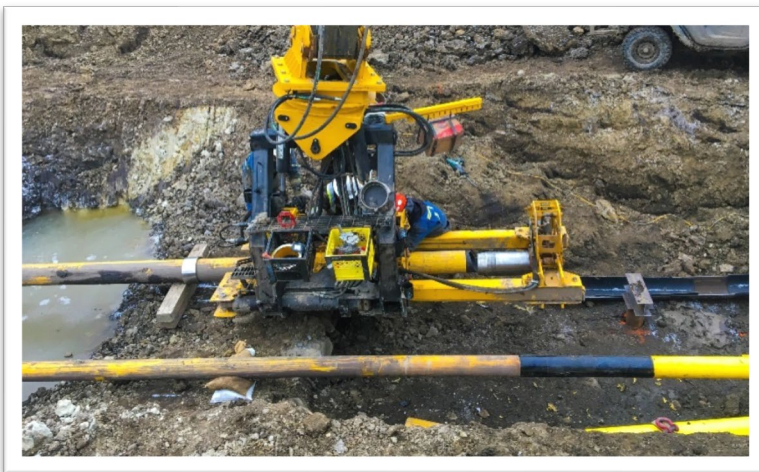


- At all times ClickWeld® joints should be in straight sections of pipe, and at no time should the ClickWeld® joint be on the bent section.
- Roped bends, long sweeping bends, and drag sections react the same as conventional steel line pipe and are easily incorporated into the CORE system design.
- CORE Liner® should be bent cold to a minimum radius of 20D.
- Bends larger than 30 degrees should be factory bent and must be pre-ordered.

- Customer sign-off on ROW bend requirements (quantity and angle) is required prior to bending.

Risers

- Risers are factory bent and must be pre-ordered.
- Customer sign-off on CORE Liner® riser drawings is required prior to bending.
- A minimum of two separate lifting devices (track hoe, side boom, picker) are required for installation.



- CORE Liner® risers should be supported as per industry best practices or company policy.
- Care should be taken to ensure that ditch depth and riser support options accommodate the riser dimensions.
- As-built drawings can be provided after bends are complete.

Example of Riser Sleeper