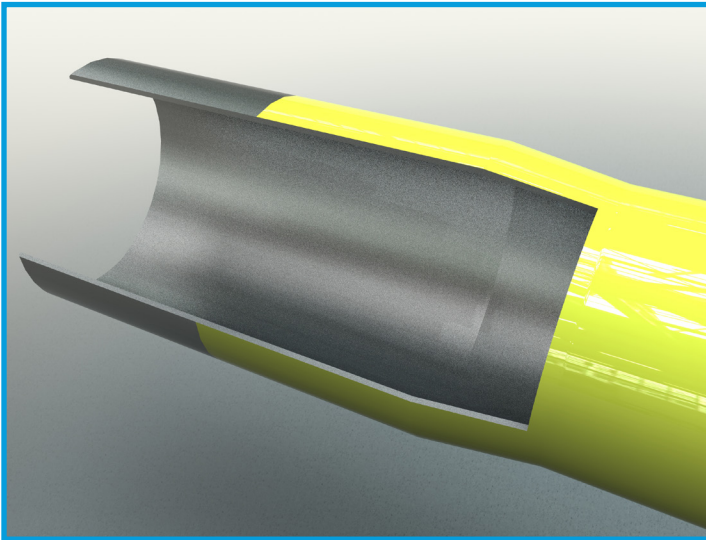




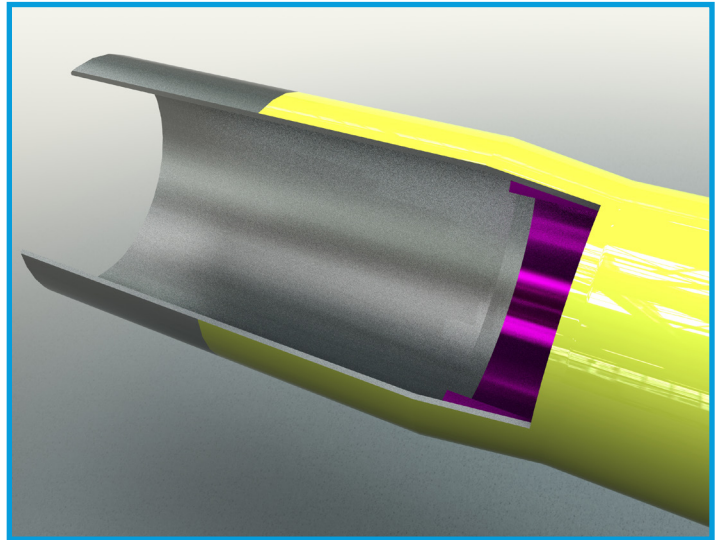
CORE LINEPIPE

910, 736 - 8<sup>th</sup> Avenue SW  
Calgary, AB, T2P 1H4  
Office: (587) 333-6685

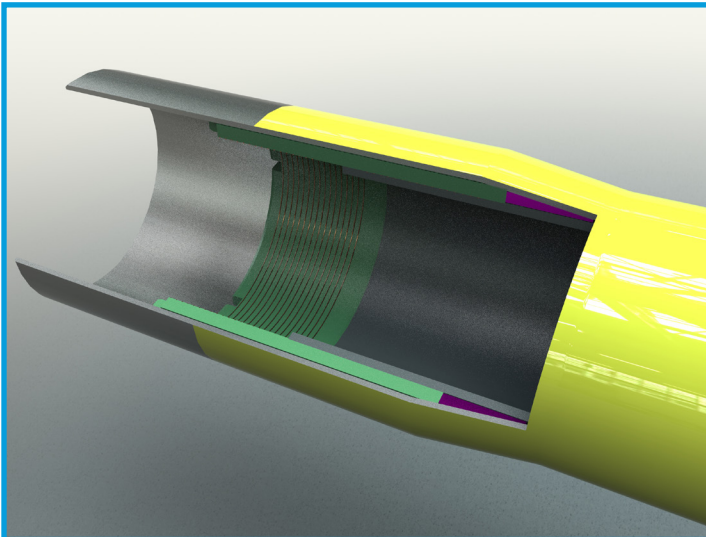
## ClickWeld® Assembly by Step



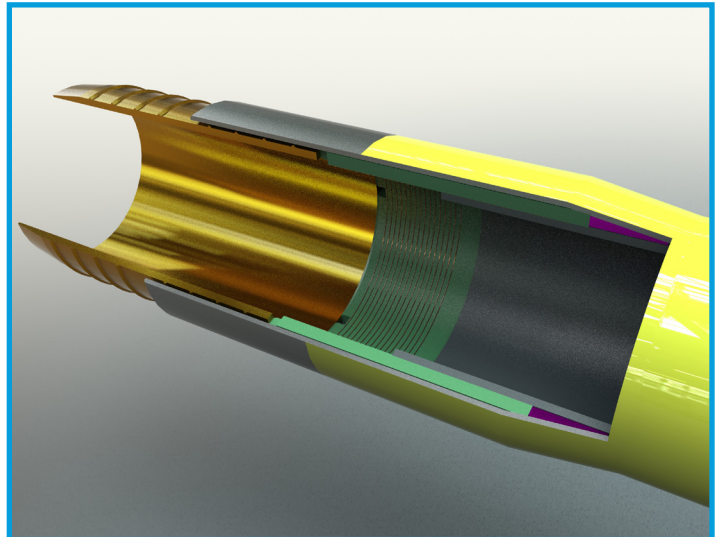
**1. Belled Steel Factory End**



**2. Inserted Retaining Ring**



**3. Liner and EF Coupling inserted  
inside steel pipe**

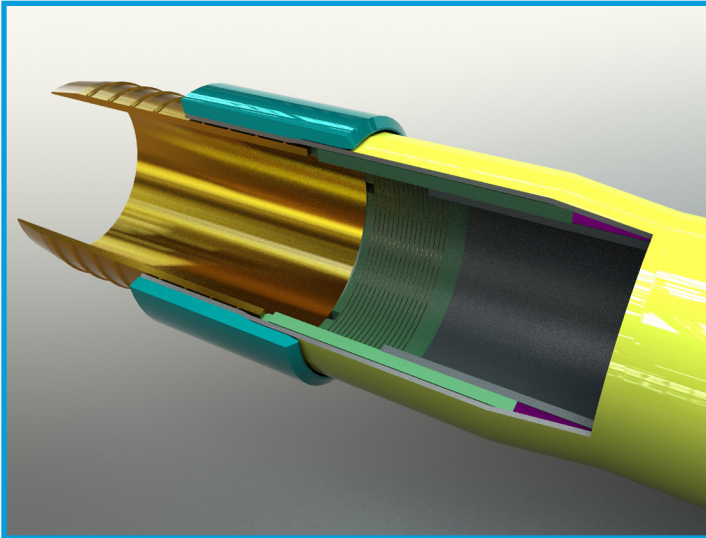


**4. Mandrel inserted inside the bell –  
butted up to EF Coupling**

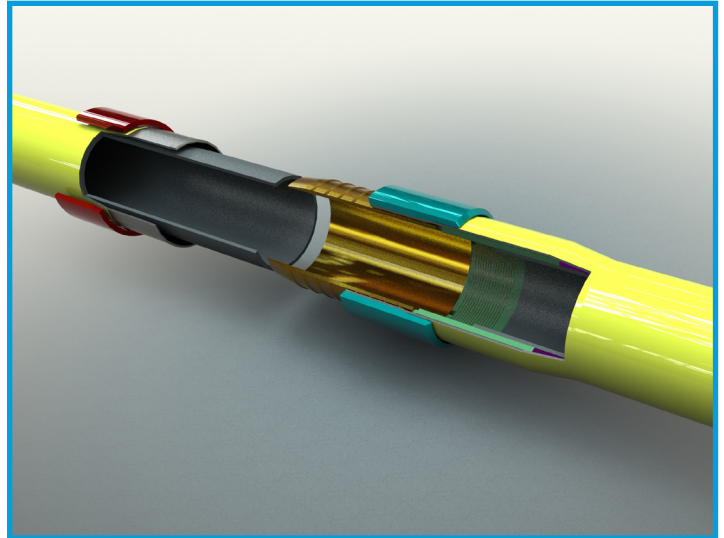


CORE LINEPIPE

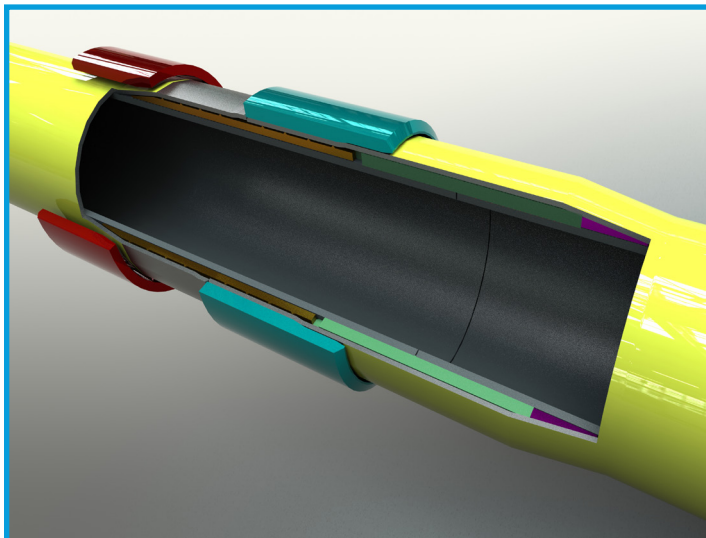
910, 736 - 8<sup>th</sup> Avenue SW  
Calgary, AB, T2P 1H4  
Office: (587) 333-6685



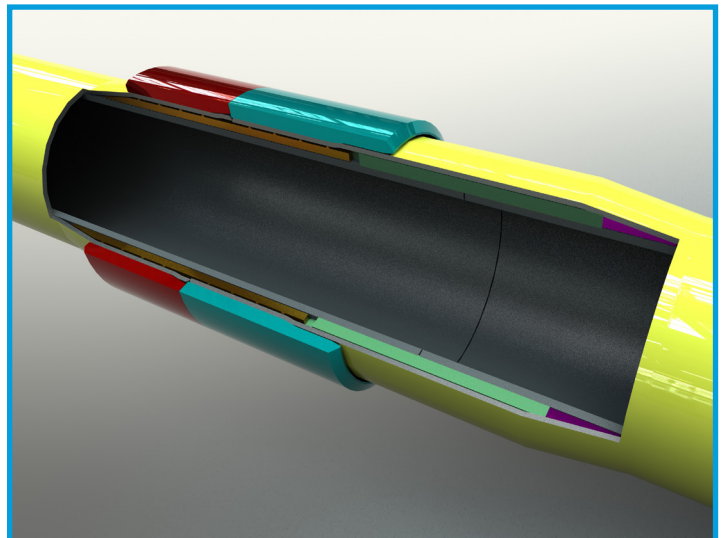
**5. Factory Ring pressed over  
Factory Bell**



**6. Stabbing Field and Factory ends  
together**



**7. Factory/Field Ends stabbed together  
- Field Bell over mandrel**



**8. Field Ring pressed to complete  
ClickWeld® joint**